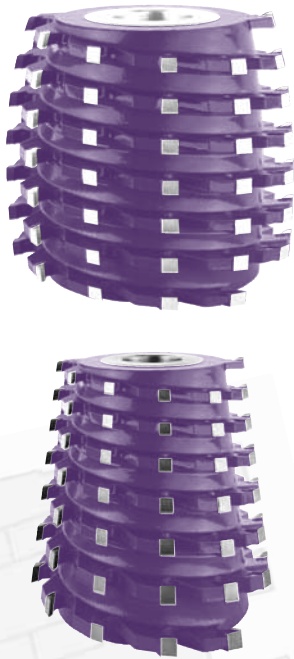


# FRESE ELICOIDALI MULTITAGLIENTI SAGOMATE **0111**

## PROFILED MULTICUT SPIRAL CUTTERS

2



Z=12/16 / Hc				
Cod.	D.max	B	d	Z
001	125	80	30/35/40/50	12
002	125	80	30/35/40/50	16
003	125	120	30/35/40/50	12
004	125	120	30/35/40/50	16
005	125	150	30/35/40/50	12
006	125	150	30/35/40/50	16
007	125	180	30/35/40/50	12
008	125	180	30/35/40/50	16
009	125	230	30/35/40/50	12
010	125	230	30/35/40/50	16
011	140	150	30/35/40/50	16
012	140	180	30/35/40/50	16
013	140	230	30/35/40/50	16

B = spessore in mm. - cutting height in mm. D = diametro in mm - diameter in mm.  
d = foro in mm. - bore in mm. Z = numero dei taglienti - number of cutting edges

Esecuzione frese con incavi: aumento 5% - with chamfers execution 5% price increase

### CARATTERISTICHE TECNICHE

Fresa a 12/16 taglienti in Hc (HM riportato) frazionati, posizionati su sedi ad andamento spiriodale, con elica a due principi. L'utensile può essere realizzato per profili con piccola sfalsità di sagoma. Adatto per legni teneri, duri e incollati.

### IMPIEGO

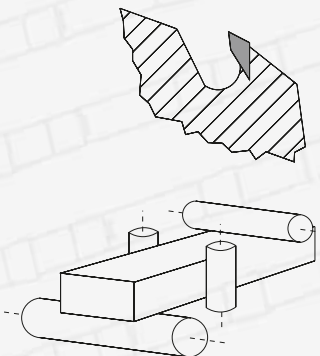
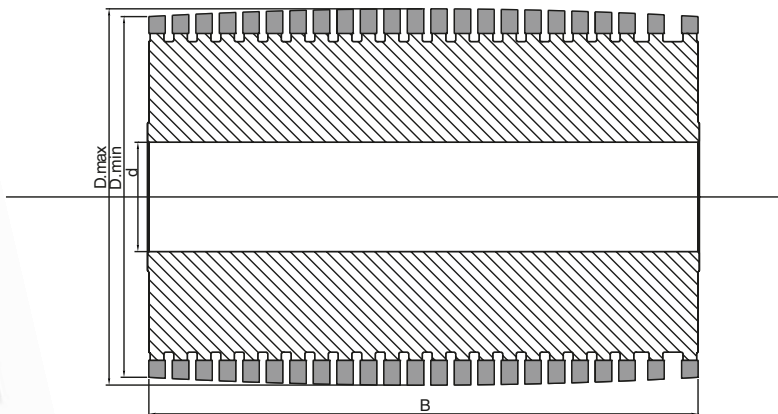
SCORNICIATRICE, CONTORNATRICE, TOUPIE

### TECHNICAL SPECIFICATIONS

Cutter with n.12/16 fractioned cutting wings in Hc (brazed tungsten carbide), positioned on a spiral design, with two starting helicies. The cutter can be manufactured for profile with small shape stagger. Suitable for soft and hard timbers and glued panels.

### APPLICATION

MOULDER, COPYSHAPING, SPINDLE MOULDER



**-60%**



RUMOROSITA'  
NOISE

**-50%**



ENERGIA  
ENERGY

**+250%**



VELOCITA' DI  
AVANZAMENTO  
ADVANCING  
SPEED

**+80%**



FRAZIONAMENTO  
DEL TRUCIOLO  
FRACTIONATION  
OF THE CHIP

**-70%**



MANUTENZIONE  
MAINTENANCE