

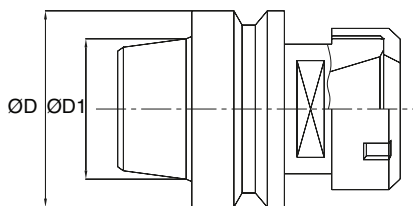
# 1020 MANDRINI PORTA PINZA

## COLLET HOLDERS

Rot.Dx/RH	Rot.Sx/LH	Rif.	D	D1	PINZA - COLLECT
Cod.	Cod.				
001	002	HSK 63 F	63	38	ER 32
003	004	HSK 63 F	63	38	ER 40

D = diametro in mm. - diameter in mm. D1 = diametro in mm. - diameter in mm.  
 Rif = riferimento - reference Rot. = senso di rotazione - rotation sense

• SCM - BIESSE - ESSETRE

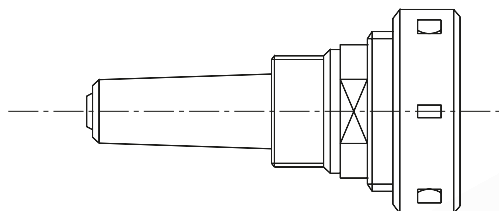


# 1021 MANDRINI PORTA PINZA

## COLLET HOLDERS

Rot.Dx/RH	Rot.Sx/LH	Rif.	PINZA - COLLECT
Cod.	Cod.		
001	002	CM2 M30 x 1,5	ER 32
003	004	CM3 M30 x 1,5	ER 32

Rif = riferimento - reference Rot. = senso di rotazione - rotation sense



# 1022 MANDRINI PORTA PINZA

## COLLET HOLDERS

Rot.Dx/RH	Rot.Sx/LH	Att.	PINZA - COLLECT
Cod.	Cod.		
001	002	D=20 x 60	ER 32
003	004	D=25 x 60	ER 32

Att. = attacco in mm. - shank in mm. Rot. = senso di rotazione - rotation sense

